

RESIDENCE A*

1 BED / 1 BATH

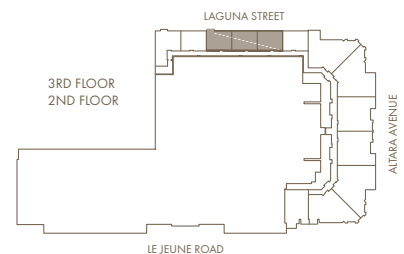
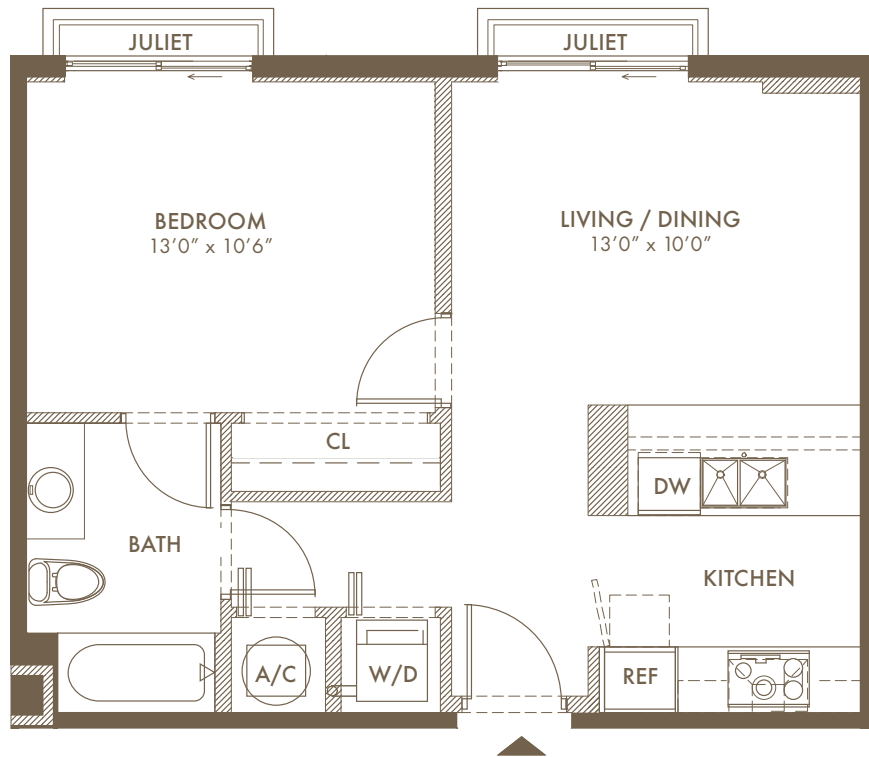
A/C Area 584 Sq. Ft. / 54.26 M²

JULIET 11 Sq. Ft. / 1.02 M²

TOTAL 606 Sq. Ft. / 56.30 M²



MERRICK MANOR



The sketches, renderings, graphics materials, plans, specifications, terms, conditions and statements contained herein are proposed only, and the Developer reserves the right to modify, revise or withdraw any or all of the same in its sole discretion and without prior notice. All improvements, designs and construction are subject to first obtaining the appropriate federal, state and local permits and approvals for same. These drawings and depictions are conceptual only and are for the convenience of reference. They should not be relied upon as representations, express or implied, of the final detail of the residences. The Developer expressly reserved the right to make modifications, revisions and changes it deemed desirable in its sole and absolute discretion. Any dimensions reflected herein are approximate and will vary with actual construction. All floor plans and development plans are proposed and conceptual only, and are subject to change and may not necessarily accurately reflect the final plans and specifications for the Condominium or the surrounding areas. Stated square footages and dimensions are measured to the exterior boundaries of the exterior walls and the centerline of interior demising walls between units and will vary from the dimensions that would be determined by using the description and definition of the "Unit" set forth in the Declaration (which generally only includes the interior airspace between the perimeter walls and excludes all interior structural components and other common elements). This method is generally used in sales materials and is provided to allow a prospective purchaser to compare the condominium units in the Condominium with units in other condominium projects that utilize the same method. The area of the condominium unit, as determined in accordance with these defined unit boundaries, is set forth herein and is labeled as "AC" (Terraces and balconies, although included in the total square footage, are not part of the condominium unit). Measurements of rooms are generally taken at the farthest points of each given room (as if the room were a perfect rectangle), without regard for any cutouts or variations. Accordingly, the area of the actual room will typically be smaller than the product obtained by multiplying the stated length and width.

* Floorplan for Residence A2 Shown Above

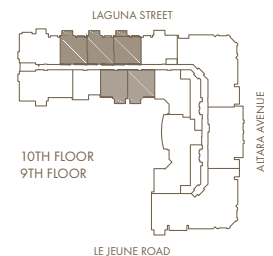
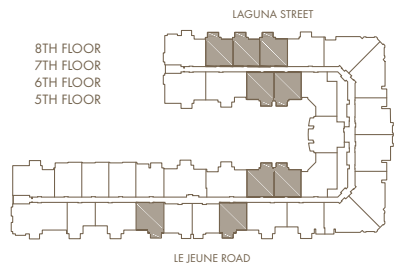
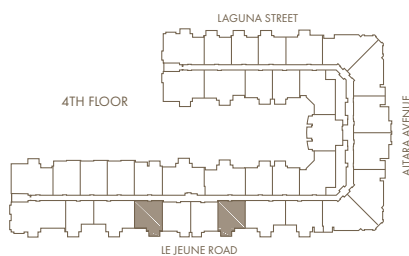
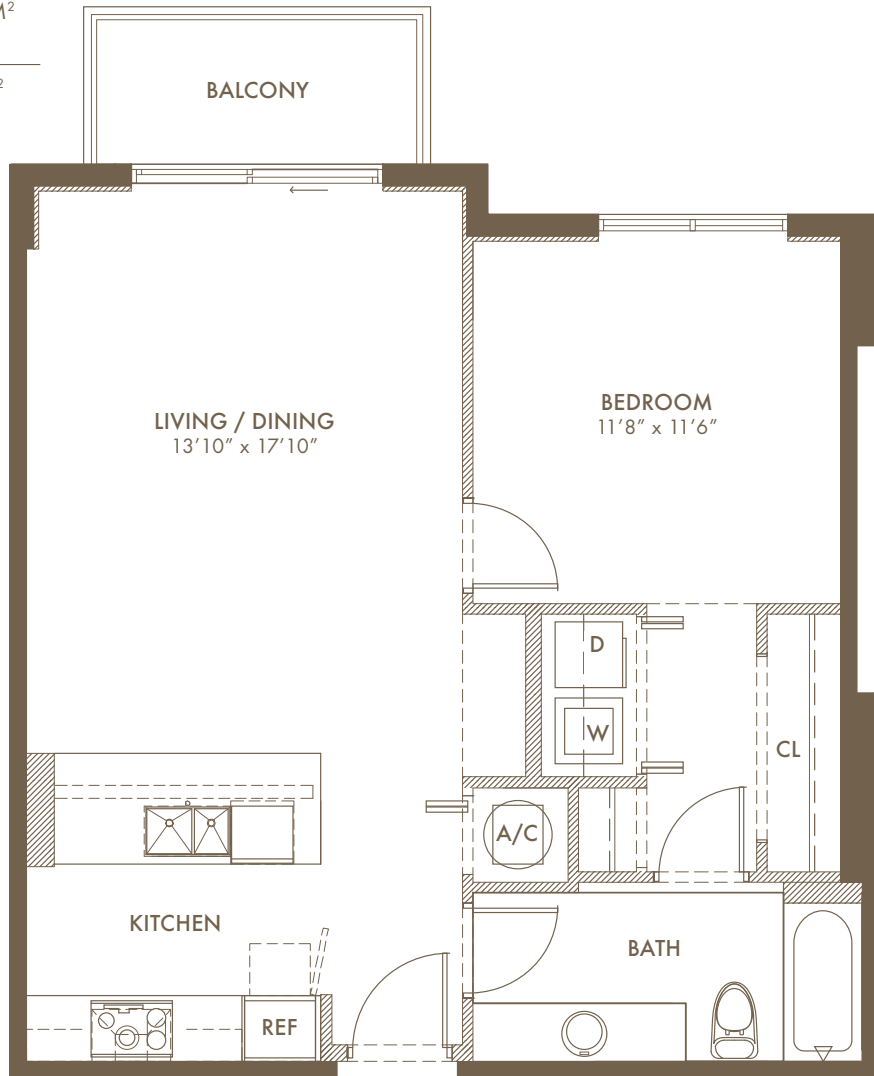
RESIDENCE B*

1 BED / 1 BATH

A/C Area 768 Sq. Ft. / 71.35 M²
 BALCONY 55 Sq. Ft. / 5.11 M²
 JULIET 11 Sq. Ft. / 1.02 M²
 TOTAL 834 Sq. Ft. / 77.48 M²



MERRICK MANOR



The sketches, renderings, graphics materials, plans, specifications, terms, conditions and statements contained herein are proposed only, and the Developer reserves the right to modify, revise or withdraw any or all of the same in its sole discretion and without prior notice. All improvements, designs and construction are subject to first obtaining the appropriate federal, state and local permits and approvals for same. These drawings and depictions are conceptual only and are for the convenience of reference. They should not be relied upon as representations, express or implied, of the final detail of the residences. The Developer expressly reserved the right to make modifications, revisions and changes it deemed desirable in its sole and absolute discretion. Any dimensions reflected herein are approximate and will vary with actual construction. All floor plans and development plans are proposed and conceptual only, and are subject to change and may not necessarily accurately reflect the final plans and specifications for the Condominium or the surrounding areas. Stated square footages and dimensions are measured to the exterior boundaries of the exterior walls and the centerline of interior demising walls between units and will vary from the dimensions that would be determined by using the description and definition of the "Unit" set forth in the Declaration (which generally only includes the interior airspace between the perimeter walls and excludes all interior structural components and other common elements). This method is generally used in sales materials and is provided to allow a prospective purchaser to compare the condominium units in the Condominium with units in other condominium projects that utilize the same method. The area of the condominium unit, as determined in accordance with these defined unit boundaries, is set forth herein and is labeled as "AC" (Terraces and balconies, although included in the total square footage, are not part of the condominium unit). Measurements of rooms are generally taken at the farthest points of each given room (as if the room were a perfect rectangle), without regard for any cutouts or variations. Accordingly, the area of the actual room will typically be smaller than the product obtained by multiplying the stated length and width.

* Floorplan for Residence B26 Shown Above

RESIDENCE B7

1 BED / 1 BATH

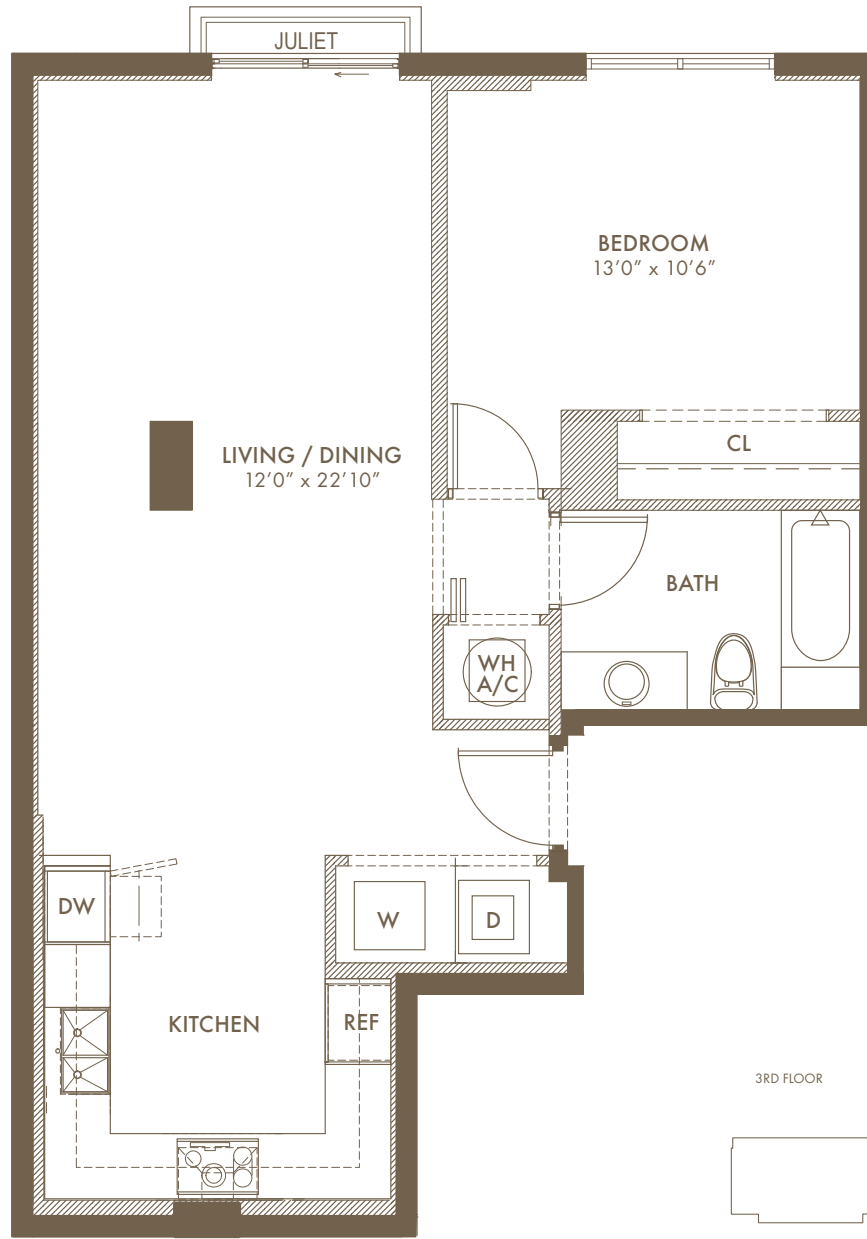
A/C Area 831 Sq. Ft. / 77.20 M²

JULIET 11 Sq. Ft. / 1.02 M²

TOTAL 842 Sq. Ft. / 78.22 M²



MERRICK MANOR



The sketches, renderings, graphics materials, plans, specifications, terms, conditions and statements contained herein are proposed only, and the Developer reserves the right to modify, revise or withdraw any or all of the same in its sole discretion and without prior notice. All improvements, designs and construction are subject to first obtaining the appropriate federal, state and local permits and approvals for same. These drawings and depictions are conceptual only and are for the convenience of reference. They should not be relied upon as representations, express or implied, of the final detail of the residences. The Developer expressly reserves the right to make modifications, revisions and changes it deemed desirable in its sole and absolute discretion. Any dimensions reflected herein are approximate and will vary with actual construction. All floor plans and development plans are proposed and conceptual only, and are subject to change and may not necessarily accurately reflect the final plans and specifications for the Condominium or the surrounding areas. Stated square footages and dimensions are measured to the exterior boundaries of the exterior walls and the centerline of interior demising walls between units and will vary from the dimensions that would be determined by using the description and definition of the "Unit" set forth in the Declaration (which generally only includes the interior airspace between the perimeter walls and excludes all interior structural components and other common elements). This method is generally used in sales materials and is provided to allow a prospective purchaser to compare the condominium units in the Condominium with units in other condominium projects that utilize the same method. The area of the condominium unit, as determined in accordance with these defined unit boundaries, is set forth herein and is labeled as "AC" (Terraces and balconies, although included in the total square footage, are not part of the condominium unit). Measurements of rooms are generally taken at the farthest points of each given room (as if the room were a perfect rectangle), without regard for any cutouts or variations. Accordingly, the area of the actual room will typically be smaller than the product obtained by multiplying the stated length and width.

RESIDENCE C

1 BED / 1 BATH

A/C Area 963 Sq. Ft. / 89.47 M²

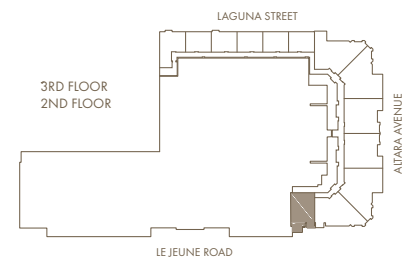
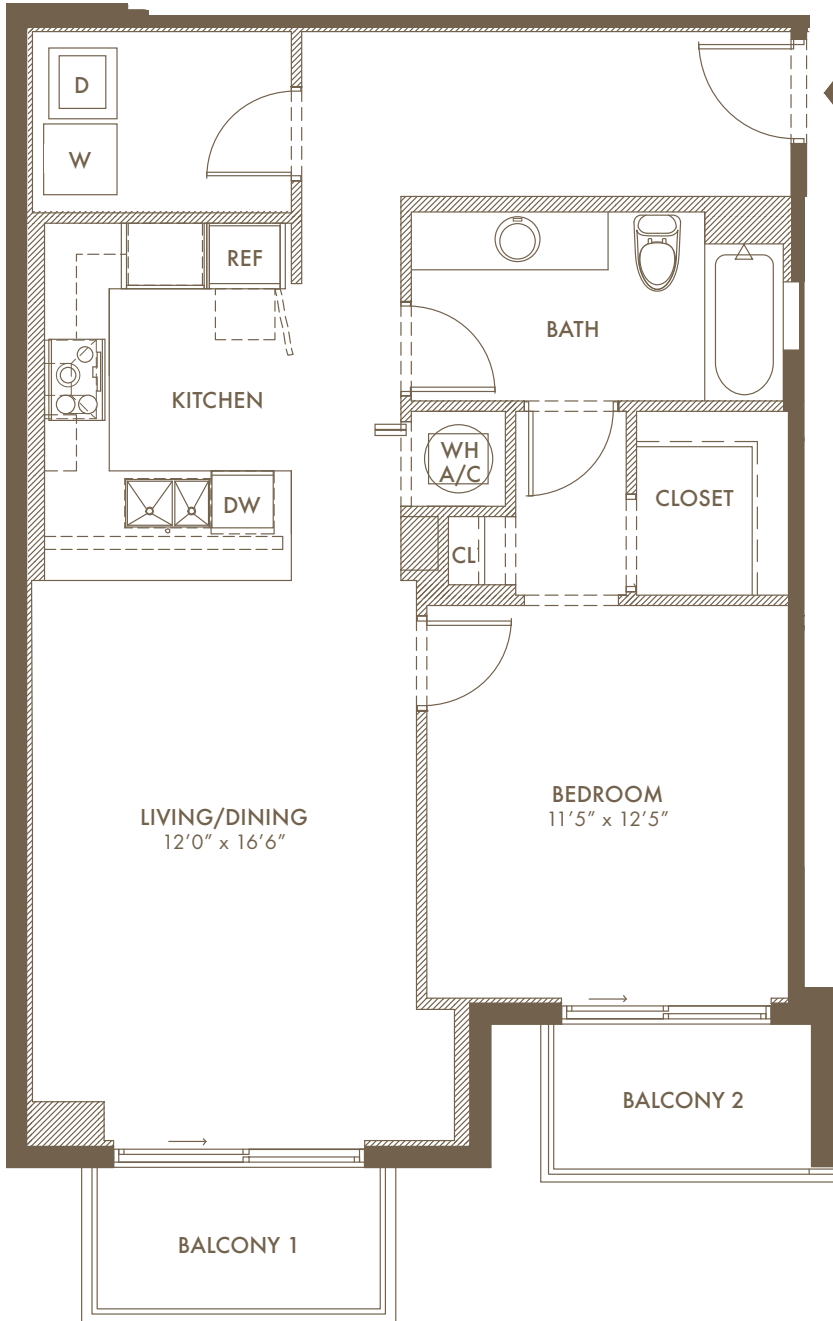
BALCONY 1 55 Sq. Ft. / 5.11 M²

BALCONY 2 45 Sq. Ft. / 4.18 M²

TOTAL 1063 Sq. Ft. / 98.76 M²

M

MERRICK MANOR



The sketches, renderings, graphics materials, plans, specifications, terms, conditions and statements contained herein are proposed only, and the Developer reserves the right to modify, revise or withdraw any or all of the same in its sole discretion and without prior notice. All improvements, designs and construction are subject to first obtaining the appropriate federal, state and local permits and approvals for same. These drawings and depictions are conceptual only and are for the convenience of reference. They should not be relied upon as representations, express or implied, of the final detail of the residences. The Developer expressly reserved the right to make modifications, revisions and changes it deemed desirable in its sole and absolute discretion. Any dimensions reflected herein are approximate and will vary with actual construction. All floor plans and development plans are proposed and conceptual only, and are subject to change and may not necessarily accurately reflect the final plans and specifications for the Condominium or the surrounding areas. Stated square footages and dimensions are measured to the exterior boundaries of the exterior walls and the centerline of interior demising walls between units and will vary from the dimensions that would be determined by using the description and definition of the "Unit" set forth in the Declaration (which generally only includes the interior airspace between the perimeter walls and excludes all interior structural components and other common elements). This method is generally used in sales materials and is provided to allow a prospective purchaser to compare the condominium units in the Condominium with units in other condominium projects that utilize the same method. The area of the condominium unit, as determined in accordance with these defined unit boundaries, is set forth herein and is labeled as "AC" (Terraces and balconies, although included in the total square footage, are not part of the condominium unit). Measurements of rooms are generally taken at the farthest points of each given room (as if the room were a perfect rectangle), without regard for any cutouts or variations. Accordingly, the area of the actual room will typically be smaller than the product obtained by multiplying the stated length and width.

RESIDENCE D*

1 BED / 1 BATH

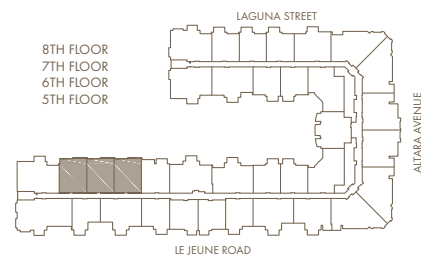
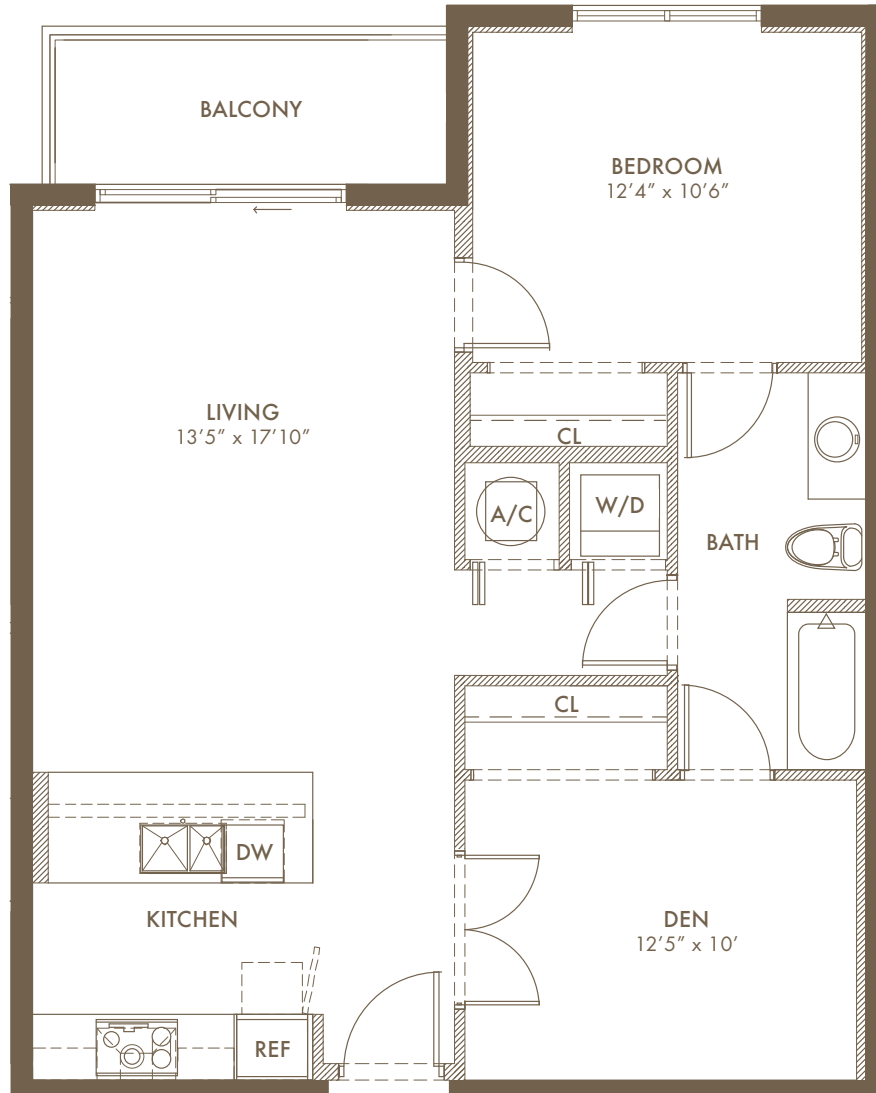
A/C Area 849 Sq. Ft. / 78.87 M²

BALCONY 65 Sq. Ft. / 5.95 M²

TOTAL 914 Sq. Ft. / 84.91 M²



MERRICK MANOR



The sketches, renderings, graphics materials, plans, specifications, terms, conditions and statements contained herein are proposed only, and the Developer reserves the right to modify, revise or withdraw any or all of the same in its sole discretion and without prior notice. All improvements, designs and construction are subject to first obtaining the appropriate federal, state and local permits and approvals for same. These drawings and depictions are conceptual only and are for the convenience of reference. They should not be relied upon as representations, express or implied, of the final detail of the residences. The Developer expressly reserved the right to make modifications, revisions and changes it deemed desirable in its sole and absolute discretion. Any dimensions reflected herein are approximate and will vary with actual construction. All floor plans and development plans are proposed and conceptual only, and are subject to change and may not necessarily accurately reflect the final plans and specifications for the Condominium or the surrounding areas. Stated square footages and dimensions are measured to the exterior boundaries of the exterior walls and the centerline of interior demising walls between units and will vary from the dimensions that would be determined by using the description and definition of the "Unit" set forth in the Declaration (which generally only includes the interior airspace between the perimeter walls and excludes all interior structural components and other common elements). This method is generally used in sales materials and is provided to allow a prospective purchaser to compare the condominium units in the Condominium with units in other condominium projects that utilize the same method. The area of the condominium unit, as determined in accordance with these defined unit boundaries, is set forth herein and is labeled as "AC" (Terraces and balconies, although included in the total square footage, are not part of the condominium unit). Measurements of rooms are generally taken at the farthest points of each given room (as if the room were a perfect rectangle), without regard for any cutouts or variations. Accordingly, the area of the actual room will typically be smaller than the product obtained by multiplying the stated length and width.

* Floorplan for Residence D4 Shown Above

RESIDENCE N1

1 BED / 1 BATH

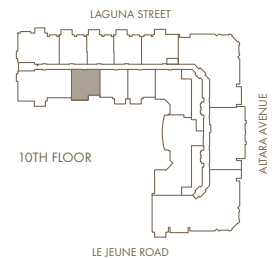
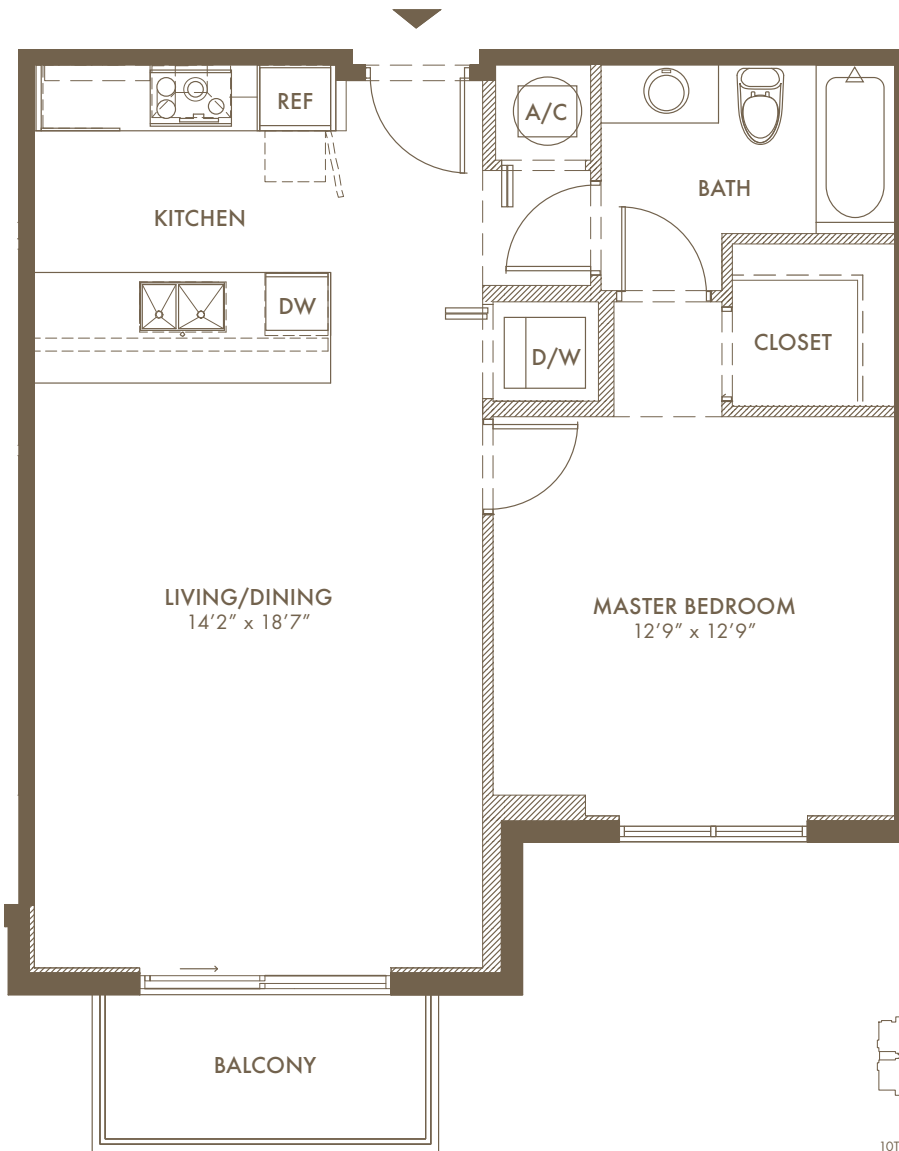
A/C Area 776 Sq. Ft. / 72.09 M²

BALCONY 55 Sq. Ft. / 5.11 M²

TOTAL 831 Sq. Ft. / 77.20 M²



MERRICK MANOR



The sketches, renderings, graphics materials, plans, specifications, terms, conditions and statements contained herein are proposed only, and the Developer reserves the right to modify, revise or withdraw any or all of the same in its sole discretion and without prior notice. All improvements, designs and construction are subject to first obtaining the appropriate federal, state and local permits and approvals for same. These drawings and depictions are conceptual only and are for the convenience of reference. They should not be relied upon as representations, express or implied, of the final detail of the residences. The Developer expressly reserves the right to make modifications, revisions and changes it deemed desirable in its sole and absolute discretion. Any dimensions reflected herein are approximate and will vary with actual construction. All floor plans and development plans are proposed and conceptual only, and are subject to change and may not necessarily accurately reflect the final plans and specifications for the Condominium or the surrounding areas. Stated square footages and dimensions are measured to the exterior boundaries of the exterior walls and the centerline of interior demising walls between units and will vary from the dimensions that would be determined by using the description and definition of the "Unit" set forth in the Declaration (which generally only includes the interior airspace between the perimeter walls and excludes all interior structural components and other common elements). This method is generally used in sales materials and is provided to allow a prospective purchaser to compare the condominium units in the Condominium with units in other condominium projects that utilize the same method. The area of the condominium unit, as determined in accordance with these defined unit boundaries, is set forth herein and is labeled as "AC" (Terraces and balconies, although included in the total square footage, are not part of the condominium unit). Measurements of rooms are generally taken at the farthest points of each given room (as if the room were a perfect rectangle), without regard for any cutouts or variations. Accordingly, the area of the actual room will typically be smaller than the product obtained by multiplying the stated length and width.